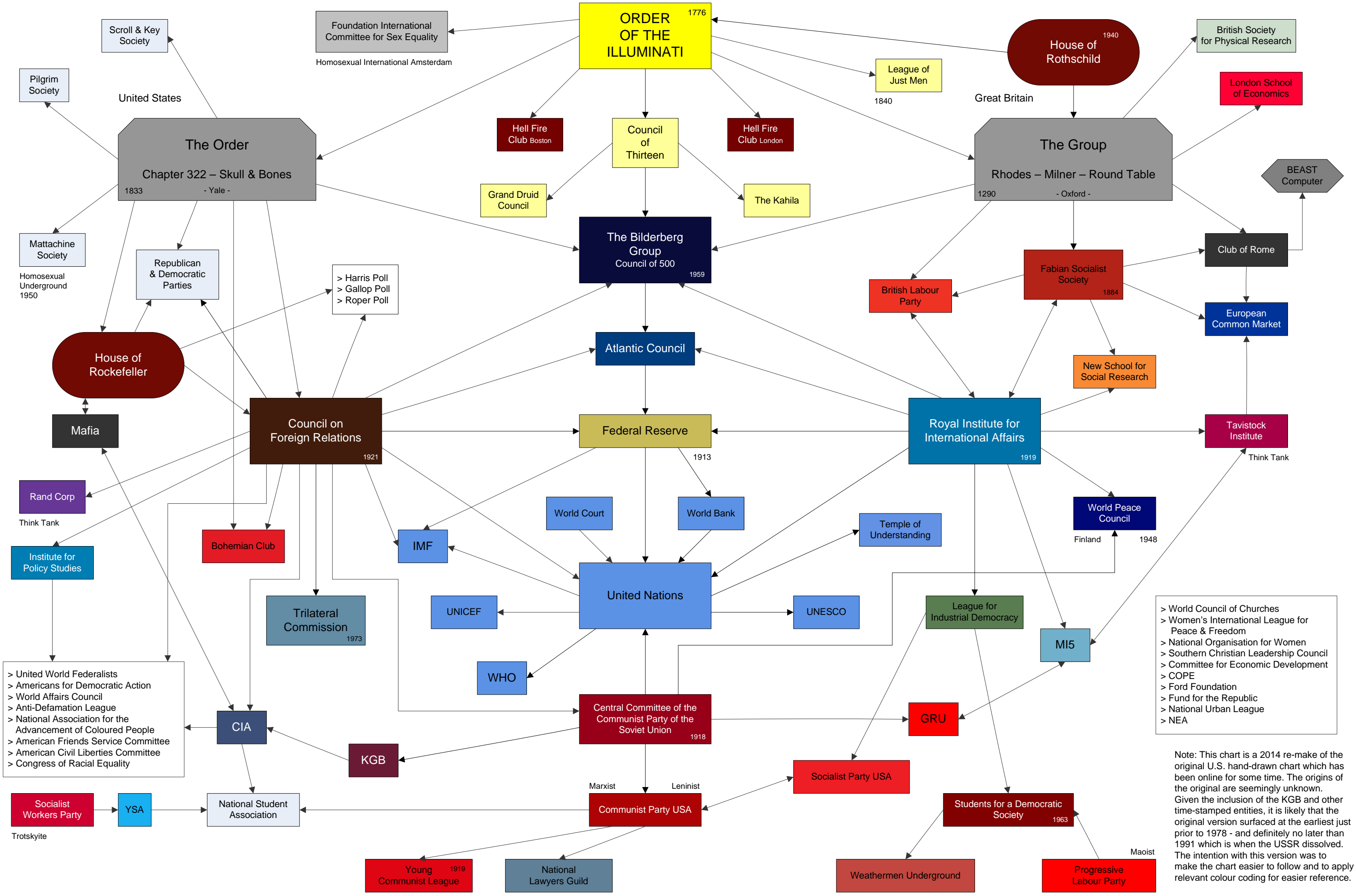


"The Conspiracy to Rule the World" v2.0 2014

While the original chart upon which this version is based may be historic, the basic structure is still relevant. See notes below.



- > World Council of Churches
- > Women's International League for Peace & Freedom
- > National Organisation for Women
- > Southern Christian Leadership Council
- > Committee for Economic Development
- > COPE
- > Ford Foundation
- > Fund for the Republic
- > National Urban League
- > NEA

Note: This chart is a 2014 re-make of the original U.S. hand-drawn chart which has been online for some time. The origins of the original are seemingly unknown. Given the inclusion of the KGB and other time-stamped entities, it is likely that the original version surfaced at the earliest just prior to 1978 - and definitely no later than 1991 which is when the USSR dissolved. The intention with this version was to make the chart easier to follow and to apply relevant colour coding for easier reference.